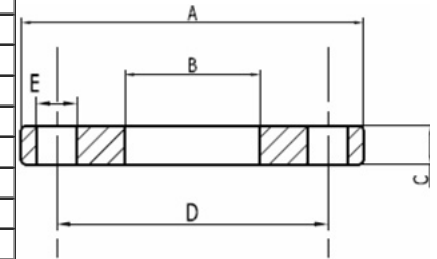


## BS10 Plate Flanges

### BS 10:1962 Table D Plate Flange

Size	A	B	C	D	E	No Of Bolts
½"	95.00	22.00	4.80	66.70	12.70	4.00
¾"	102.00	27.70	4.80	73.00	12.70	4.00
1"	114.00	34.50	4.80	82.60	12.70	4.00
1 1/4"	121.00	43.20	6.40	87.30	12.70	4.00
1 1/2"	133.00	49.50	6.40	98.40	12.70	4.00
2"	152.00	62.00	7.90	114.30	15.90	4.00
2 1/2"	165.00	74.70	7.90	127.00	15.90	4.00
3"	184.00	90.70	9.50	146.00	15.90	4.00
3 1/2"	203.00	103.40	9.50	165.10	15.90	4.00
4"	216.00	116.10	9.50	177.80	15.90	4.00
5"	254.00	143.80	12.70	209.60	15.90	8.00
6"	279.00	170.70	12.70	235.00	15.90	8.00
8"	337.00	221.50	12.70	292.10	15.90	8.00
10"	406.00	276.40	15.90	355.60	19.10	8.00
12"	457.00	327.20	19.00	406.40	19.10	12.00
14"	527.00	359.20	22.00	469.90	22.20	12.00
16"	578.00	410.50	22.00	520.70	22.20	12.00
18"	641.00	461.80	25.00	584.20	22.20	12.00
20"	705.00	513.10	28.50	641.40	22.20	16.00
24"	826.00	615.90	31.80	755.70	25.40	16.00

All dimensions are in mm



Tel: +919867815181

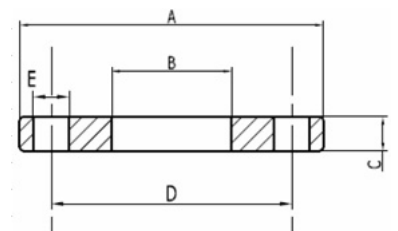
Email: sales@randhirmetal.com

Website: www.randhirmetal.com

### BS 10:1962 Table E Plate Flange

Size	A	B	C	D	E	No Of Bolts
½"	95.00	22.30	6.40	66.70	12.70	4.00
¾"	102.00	27.70	6.40	73.00	12.70	4.00
1"	114.00	34.50	7.10	82.60	12.70	4.00
1 1/4"	121.00	43.20	7.90	87.30	12.70	4.00
1 1/2"	133.00	49.50	8.70	98.40	12.70	4.00
2"	152.00	62.00	9.50	114.30	15.90	4.00
2 1/2"	165.00	74.70	10.30	127.00	15.90	4.00
3"	184.00	90.70	11.10	146.00	15.90	4.00
4"	216.00	116.10	12.70	177.80	15.90	8.00
5"	254.00	143.80	14.30	209.60	15.90	8.00
6"	279.00	170.70	17.50	235.00	19.10	8.00
8"	337.00	221.50	19.00	292.10	19.10	8.00
10"	406.00	276.40	22.00	355.60	19.10	12.00
12"	457.00	327.20	25.00	406.40	22.20	12.00
14"	527.00	359.20	28.50	469.90	22.20	12.00
18"	641.00	461.80	34.90	584.20	22.20	16.00
20"	705.00	513.10	38.00	641.40	22.20	16.00
24"	826.00	615.90	47.60	755.65	28.60	16.00

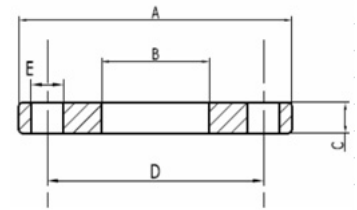
All dimensions are in mm



**BS 10:1962 Table F Plate Flange**

Size	A	B	C	D	E	No Of Bolts
½"	95.00	22.3	9.5	66.7	12.7	4
¾"	102.00	27.7	9.5	73	12.7	4
1"	121.00	34.5	9.5	87.3	15.9	4
1 1/4"	133.00	43.2	12.7	98.4	15.9	4
1 1/2"	152.00	49.5	12.7	104.8	15.9	4
2"	165.00	62	15.9	127	15.9	4
2 1/2"	184.00	74.7	15.9	146.1	15.9	8
3"	203.00	90.7	15.9	165.1	15.9	8
4"	229	116.1	19	190.5	15.9	8
5"	279	143.8	22.2	235	19	8
6"	305	170.7	22.2	260.4	19	12
8"	368	221.5	25.4	323.9	19	12
10"	432	276.4	28.6	381	22.2	12
12"	489	327.2	31.8	438.2	22.2	16

All dimensions are in mm

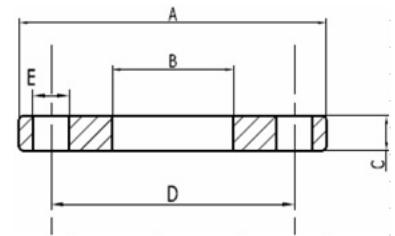


Tel: +919867815181  
 Email: sales@randhirmetal.com  
 Website: www.randhirmetal.com

**BS 10:1962 Table H Plate Flange**

Size	A	B	C	D	E	No Of Bolts
½"	114	22.3	12.7	82.6	15.9	4
¾"	114	27.7	12.7	82.6	15.9	4
1"	121	34.5	14.3	87.3	15.9	4
1 1/4"	133	43.2	17.5	98.4	15.9	4
1 1/2"	140	49.5	17.5	104.8	15.9	4
2"	165	62	19	127	15.9	4
2 1/2"	184	74.7	19	146.1	15.9	8
3"	203	90.7	22.2	165.1	15.9	8
4"	229	116.1	25.4	190.5	15.9	8
5"	279	143.8	28.6	235	19	8
6"	305	170.7	28.6	260.4	19	12
8"	368	221.5	31.8	323.9	19	12
10"	432	276.4	34.9	381	22.2	12
12"	489	327.2	41.3	438.2	22.2	16

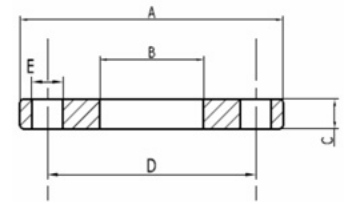
All dimensions are in mm


**BS 10:1962 Table J Plate Flange**

Size	A	B	C	D	E	No Of Bolts
½"	114	22.3	15.9	82.6	15.9	4
¾"	114	27.7	15.9	82.6	15.9	4
1"	121	34.5	19	87.3	15.9	4
1 1/4"	133	43.2	19	98.4	15.9	4

1 1/2"	140	49.5	22.2	104.8	15.9	4
2"	165	62	25.4	127	19	4
2 1/2"	184	74.7	25.4	146	19	8
3"	203	90.7	31.8	165	19	8
4"	229	116.1	34.9	190.5	19	8
5"	279	143.8	38.1	234.9	22.2	8
6"	305	170.7	38.1	260.4	22.2	12
8"	368	221.5	41.3	323.8	22.2	12
10"	432	276.4	47.6	381	25.4	12
12"	489	327.2	50.8	438.1	25.4	16

All dimensions are in mm

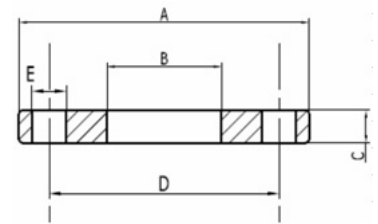


Tel: +919867815181  
Email: sales@randhirmetal.com  
Website: www.randhirmetal.com

### BS 10:1962 Table K Plate Flange

Size	A	B	C	D	E	No Of Bolts
1/2"	114	22.3	19	82.6	15.9	4
3/4"	114	27.7	19	82.6	15.9	4
1"	121	34.5	22.2	95	15.9	4
1 1/4"	133	43.2	22.2	98.4	15.9	4
1 1/2"	140	49.5	25.4	114	19	4
2"	165	62	25.4	127	15.9	8
2 1/2"	184	74.7	28.6	146	19	8
3"	203	90.7	31.8	165	19	8
4"	229	116.1	34.9	196.8	22.2	8
5"	279	143.8	41.3	234.9	22.2	12
6"	305	170.7	41.3	260.4	22.2	12
8"	368	221.5	47.6	317.5	25.4	12
10"	432	276.4	50.8	381	25.4	16
12"	489	327.2	57.1	432	28.5	16

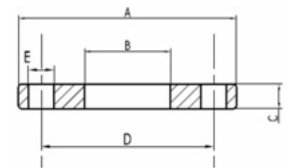
All dimensions are in mm



### BS 10:1962 Table R Plate Flange

Size	A	B	C	D	E	No Of Bolts
1/2"	114	22.3	19	82.6	15.9	4
3/4"	114	27.7	19	82.6	15.9	4
1"	127	34.5	22.2	95	15.9	4
1 1/4"	133	43.2	22.2	98.4	15.9	4
1 1/2"	152	49.5	25.4	114	19	4
2"	165	62	25.4	127	15.9	8
2 1/2"	184	74.7	28.6	146	19	8
3"	203	90.7	31.8	165	19	8
4"	241	116.1	34.9	196.8	22.2	8
5"	279	143.8	41.3	234.9	22.2	12
6"	305	170.7	44.4	260.4	22.2	12
8"	368	221.5	50.8	323.8	25.4	12
10"	432	276.4	57.1	387.3	25.4	16
12"	508	327.2	63.5	457.2	28.5	16

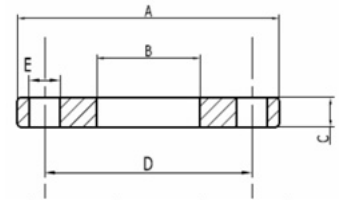
All dimensions are in mm



**BS 10:1962 Table S Plate Flange**

Size	A	B	C	D	E	No Of Bolts
½"	127	22.3	22.2	88.9	19	4
¾"	127	27.7	22.2	88.9	19	4
1"	127	27.7	22.2	88.9	19	4
1 1/4"	146	43.2	28.6	107.9	19	4
1 1/2"	159	49.5	28.6	120.6	19	4
2"	171	62	31.8	133	19	8
2 1/2"	184	74.7	31.8	146	19	8
3"	203	90.7	34.9	165	22.2	8
4"	248	116.1	41.3	203	25.4	8
5"	286	143.8	44.4	234.9	22.2	12
6"	324	170.7	50.8	273	25.4	12
8"	413	221.5	63.5	355.6	31.8	12
10"	482	276.4	79.4	425.4	31.8	16
12"	578	327.2	92.1	508	38.1	16

All dimensions are in mm

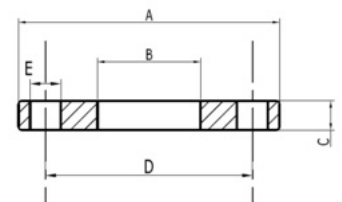


Tel: +919867815181  
Email: sales@randhirmetal.com  
Website: www.randhirmetal.com

**BS 10:1962 Table T Plate Flange**

Size	A	B	C	D	E	No Of Bolts
½"	140	22.3	25.4	102	19	4
¾"	140	27.7	25.4	102	19	4
1"	146	34.5	28.6	107.9	19	4
1 1/4"	159	43.2	31.8	120.6	22.2	4
1 1/2"	171	49.5	34.9	133	19	8
2"	184	62	34.9	146	19	8
2 1/2"	203	74.7	41.3	165	22.2	8
3"	235	90.7	47.6	190.5	25.4	8
4"	286	116.1	57.2	234.9	28.6	8
5"	324	143.8	66.7	273	28.6	12
6"	375	170.7	73	317.5	31.7	12
8"	476	221.5	88.9	406.4	38.1	12
10"	589	276.4	107.9	488.9	38.1	16
12"	654	327.2	120.6	571.5	44.4	16

All dimensions are in mm



\* There will may be typical error