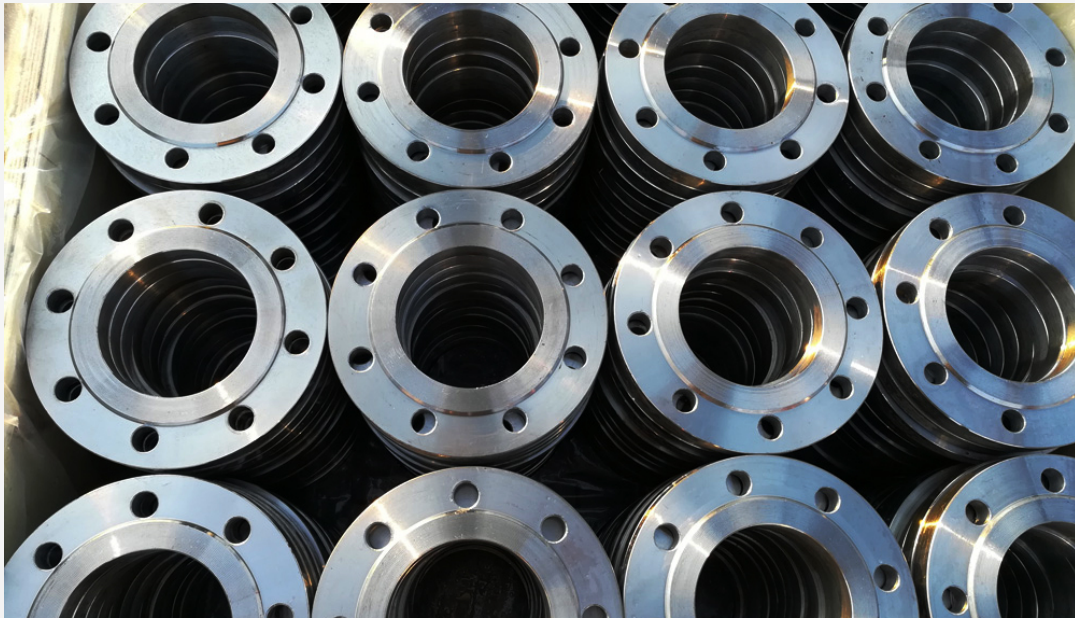


# BS FLANGES

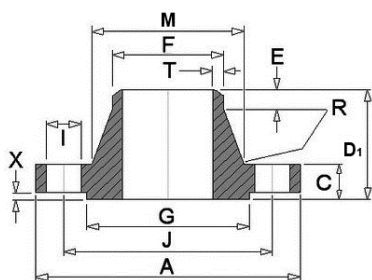
WELLGROW INDUSTRIES CORP.



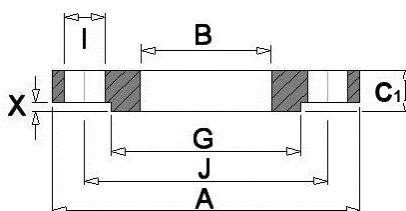
- ▲ **Weld Neck Flange**
- ▲ **Plate Flange**
- ▲ **Slip On Flange**
- ▲ **Threaded Flange**
- ▲ **Blind Flange**

## BS4504 PN2.5 Flanges

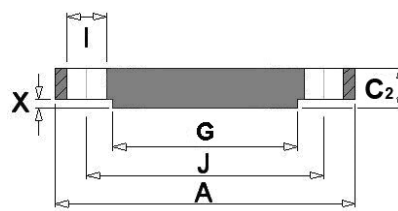
CODE 111



CODE 101



CODE 105



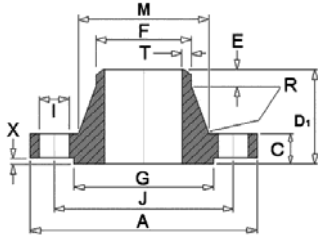
Nom. Size	Flange					Raised Face		Drilling			Bolting	Neck					Bore Diameter
	A	C	C1	C2	D1	G	X	No.	I	J		M	F	E	R	T	
10	75	12	12	12	28	35	2	4	11	50	M10	26	17.2	6	3	1.8	18.0
15	80	12	12	12	30	40	2	4	11	55	M10	30	21.3	6	3	2.0	22.0
20	90	14	14	14	32	50	2	4	11	65	M10	38	26.9	6	4	2.3	27.5
25	100	14	14	14	35	60	2	4	11	75	M10	42	33.7	6	4	2.6	34.5
32	120	14	16	14	35	70	2	4	14	90	M12	55	42.4	6	5	2.6	43.5
40	130	14	16	14	38	80	3	4	14	100	M12	62	48.3	7	5	2.6	49.5
50	140	14	16	14	38	90	3	4	14	110	M12	74	60.3	8	5	2.9	61.5
65	160	14	16	14	38	110	3	4	14	130	M12	88	76.1	9	6	2.9	77.5
80	190	16	18	16	42	128	3	4	18	150	M16	102	88.9	10	6	3.2	90.5
100	210	16	18	16	45	148	3	4	18	170	M16	130	114.3	10	6	3.6	116.0
125	240	18	20	18	48	178	3	8	18	200	M16	155	139.7	10	6	4.0	141.5
150	265	18	20	18	48	202	3	8	18	225	M16	184	168.3	12	8	4.5	170.5
200	320	20	22	20	55	258	3	8	18	280	M16	236	219.1	15	8	5.6	221.5
250	375	22	24	22	60	312	3	12	18	335	M16	290	273.0	15	10	6.3	276.5
300	440	22	24	22	62	365	4	12	22	395	M20	342	323.9	15	10	7.1	327.6
350	490	22	26	22	62	415	4	12	22	445	M20	385	355.6	15	10	7.1	359.0
400	540	22	28	22	65	465	4	16	22	495	M20	438	406.4	15	10	7.1	411.0
450	595	24	30	24	65	520	4	16	22	550	M20	492	457.0	15	12	7.1	462.0
500	645	24	30	24	68	570	4	20	22	600	M20	538	508.0	15	12	7.1	513.5
600	755	24	32	34	70	670	5	20	26	705	M24	640	610.0	16	12	7.1	616.5
700	860	24	36	-	70	-	5	24	26	810	M24	740	711.0	16	12	-	-
800	975	26	38	-	70	-	5	24	30	920	M27	842	813.0	16	12	-	-
900	1075	26	40	-	70	-	5	24	30	1020	M27	942	914.0	16	12	-	-
1000	1175	26	42	-	70	-	5	28	30	1120	M27	1045	1016.0	16	12	-	-
1200	1375	26	44	-	70	-	5	32	30	1320	M27	1245	1220.0	16	16	-	-
1400	1575	26	48	-	70	-	5	36	30	1520	M27	1445	1420.0	16	16	-	-
1600	1790	26	51	-	80	-	5	40	30	1730	M27	1645	1620.0	20	16	-	-
1800	1990	26	54	-	80	-	5	44	30	1930	M27	1845	1820.0	20	16	-	-
2000	2190	26	58	-	80	-	5	48	30	2130	M27	2045	2020.0	22	16	-	-

\* Care should be taken with these sizes as the pipe o.d. does not relate to normal stainless steel dimensions.

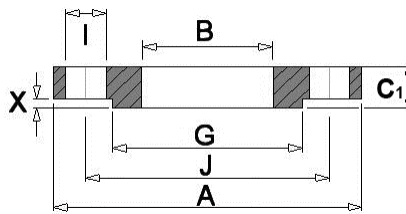
1. Weldnecks (code 111) are bored to suit schedule of pipework used.
2. Code 105 flanges are supplied flat faced unless otherwise requested by the purchaser.

## BS4504 PN6 Flanges

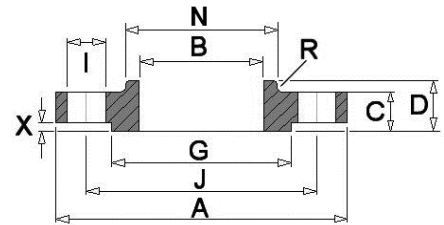
CODE 111



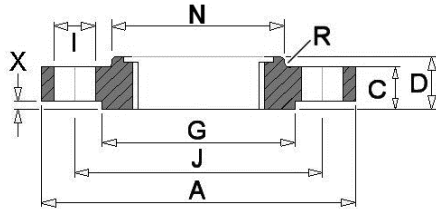
CODE 101



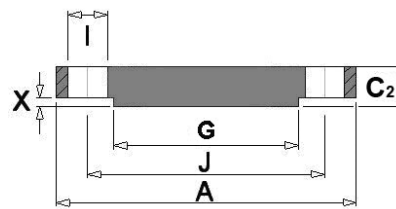
CODE 112



CODE 113



CODE 105



Dimensions in mm

Nom. Size	Flange						Raised Face		Boss	Drilling			Bolting	Neck					Bore Diameter
	DN	A	C	C1	C2	D	D1	G		X	N	No.		I	J	M	F	E	
10	75	12	12	12	20	28	35	2	25	4	11	50	M10	26	17.2	6	3	1.8	18.0
15	80	12	12	12	20	30	40	2	30	4	11	55	M10	30	21.3	6	3	2.0	22.0
20	90	14	14	14	24	32	50	2	40	4	11	65	M10	38	26.9	6	4	2.3	27.5
25	100	14	14	14	24	35	60	2	50	4	11	75	M10	42	33.7	6	4	2.6	34.5
32	120	14	16	14	26	35	70	2	60	4	14	90	M12	55	42.4	6	5	2.6	43.5
40	130	14	16	14	26	38	80	3	70	4	14	100	M12	62	48.3	7	5	2.6	49.5
50	140	14	16	14	28	38	90	3	80	4	14	110	M12	74	60.3	8	5	2.9	61.5
65	160	14	16	14	32	38	110	3	100	4	14	130	M12	88	76.1	9	6	2.9	77.5
80	190	16	18	16	34	42	128	3	110	4	18	150	M16	102	88.9	10	6	3.2	90.5
100	210	16	18	16	40	45	148	3	130	4	18	170	M16	130	114.3	10	6	3.6	116.0
125	240	18	20	18	44	48	178	3	160	8	18	200	M16	155	139.7	10	6	4.0	141.5
150	265	18	20	18	44	48	202	3	185	8	18	225	M16	184	168.3	12	8	4.5	170.5
200	320	20	22	20	44	55	258	3	240	8	18	280	M16	236	219.1	15	8	5.6	221.5
250	375	22	24	22	44	60	312	3	295	12	18	335	M16	290	273.0	15	10	6.3	276.5
300	440	22	24	22	44	62	365	4	355	12	22	395	M20	342	323.9	15	10	7.1	327.5
350	490	22	26	22	-	62	415	4	-	12	22	445	M20	385	355.6	15	10	7.1	359.5
400	540	22	28	22	-	65	465	4	-	16	22	495	M20	438	406.4	15	10	7.1	411.0
450	595	24	30	24	-	65	520	4	-	16	22	550	M20	492	457.0	15	12	7.1	462.0
500	645	24	30	24	-	68	570	4	-	20	22	600	M20	538	508.0	15	12	7.1	513.5
600	755	24	32	34	-	70	670	5	-	20	26	705	M24	640	610.0	16	12	7.1	616.5
700	860	24	40	38	-	70	775	5	-	24	26	810	M24	740	711.0	16	12	7.1	-
800	975	24	44	42	-	70	880	5	-	24	30	920	M27	842	813.0	16	12	7.1	-
900	1075	26	48	46	-	70	980	5	-	24	30	1020	M27	942	914.0	16	12	7.1	-
1000	1175	26	52	52	-	70	1080	5	-	28	30	1120	M27	1045	1016.0	16	12	7.1	-
1200	1405	28	60	60	-	90	1295	5	-	32	33	1340	M30	1248	1220.0	20	12	8.0	-
1400	1630	32	68	68	-	90	1510	5	-	36	36	1560	M33	1452	1420.0	20	12	8.0	-
1600	1830	34	76	76	-	90	1710	5	-	40	36	1760	M33	1655	1620.0	20	12	9.0	-
1800	2045	36	84	84	-	100	1920	5	-	44	39	1970	M36	1855	1820.0	20	15	10.0	-
2000	2265	38	92	92	-	110	2125	5	-	48	42	2180	M39	2058	2020.0	25	15	11.0	-

\* Care should be taken with these sizes as the pipe o.d. does not relate to normal stainless steel dimensions.

1. Weldnecks (code 111) are bored to suit schedule of pipework used.
2. Code 105 flanges are supplied flat faced unless otherwise requested by the purchaser.

Tel: +919867815181

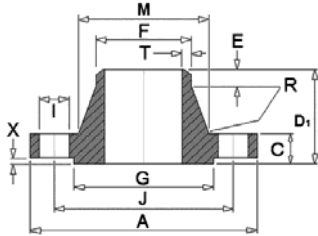
Email: sales@randhirmetal.com

Website: www.randhirmetal.com

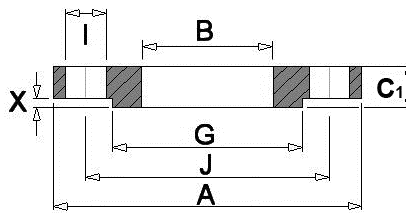


## BS4504 PN10 Flanges

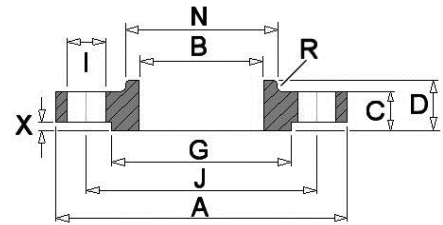
CODE 111



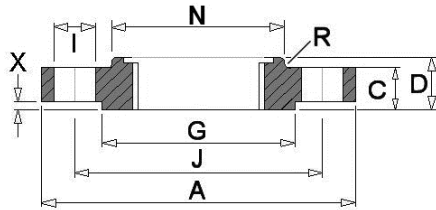
CODE 101



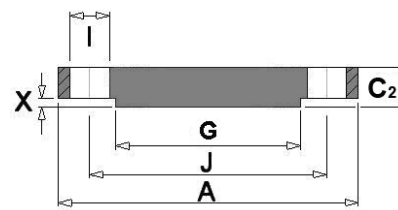
CODE 112



CODE 113



CODE 105



Dimensions in mm

DN	A	C	C1	C2	D	D1	G	X	N	No.	I	J	Bolting	M	F	E	R	T	B
10	90	14	14	14	20	35	40	2	30	4	14	60	M12	28	17.2	6	3	1.8	18.0
15	95	14	14	14	20	35	45	2	35	4	14	65	M12	32	21.3	6	3	2.0	22.0
20	105	16	16	16	24	38	58	2	45	4	14	75	M12	39	26.9	6	4	2.3	27.5
25	115	16	16	16	24	38	68	2	52	4	14	85	M12	46	33.7	6	4	2.6	34.5
32	140	16	18	16	26	40	78	2	60	4	18	100	M16	56	42.4	6	5	2.6	43.5
40	150	16	18	16	26	42	88	3	70	4	18	110	M16	64	48.3	7	5	2.6	49.5
50	165	18	20	18	28	45	102	3	84	4	18	125	M16	74	60.3	8	5	2.9	61.5
65	185	18	20	18	32	45	122	3	104	4/8	18	145	M16	92	76.1	10	6	2.9	77.5
80	200	20	20	20	34	50	138	3	118	8	18	160	M16	110	88.9	10	6	3.2	90.5
100	220	20	22	20	40	52	162	3	140	8	18	180	M16	130	114.3	12	6	3.6	116.0
125 *	250	22	22	22	44	55	188	3	168	8	18	210	M16	158	139.7	12	6	4.0	141.5
150	285	22	24	22	44	55	212	3	195	8	22	240	M20	184	168.3	12	8	4.5	170.5
200	340	24	24	24	44	62	268	3	246	8	22	295	M20	234	219.1	16	8	5.6	221.5
250	395	26	26	26	46	68	320	3	298	12	22	350	M20	288	273.0	16	10	6.3	276.5
300	445	26	28	26	46	68	370	4	350	12	22	400	M20	342	323.9	16	10	7.1	327.6
350	505	26	28	26	53	68	430	4	400	16	22	460	M20	390	355.6	16	10	7.1	359.0
400	565	26	32	26	57	72	482	4	456	16	26	515	M24	440	406.4	16	10	7.1	411.0
450	615	28	36	28	63	72	532	4	502	20	26	565	M24	488	457.0	16	12	7.1	462.0
500	670	28	38	28	67	75	585	4	559	20	26	620	M24	540	508.0	16	12	7.1	513.5
600	780	28	42	34	75	80	685	5	658	20	30	725	M27	640	610.0	18	12	7.1	616.5
700	895	30	-	38	-	80	800	5	-	24	30	840	M27	746	711.0	18	12	8.0	-
800	1015	32	-	42	-	90	905	5	-	24	33	950	M30	848	813.0	18	12	8.0	-
900	1115	34	-	46	-	95	1005	5	-	28	33	1050	M30	948	914.0	20	12	10.0	-
1000	1230	34	-	52	-	95	1110	5	-	28	36	1160	M33	1050	1016.0	20	12	10.0	-
1200	1455	38	-	60	-	115	1330	5	-	32	39	1380	M36	1256	1220.0	25	12	11.0	-
1400	1675	42	-	-	-	120	1535	5	-	36	42	1590	M39	1460	1420.0	25	12	12.0	-
1600	1915	46	-	-	-	130	1760	5	-	40	48	1820	M45	1666	1620.0	25	12	14.0	-
1800	2115	50	-	-	-	140	1960	5	-	44	48	2020	M45	1866	1820.0	30	15	15.0	-
2000	2325	54	-	-	-	150	2170	5	-	48	48	2230	M45	2070	2020.0	30	15	16.0	-
2200	2550	58	-	-	-	160	2370	6	-	52	56	2440	M52	2275	2220.0	35	15	-	-
2400	2760	62	-	-	-	170	2570	6	-	56	56	2650	M52	2478	2420.0	35	15	-	-
2600	2960	65	-	-	-	180	2780	6	-	60	56	2850	M52	2680	2620.0	40	18	-	-
2800	3180	70	-	-	-	190	3000	6	-	64	56	3070	M52	2882	2820.0	40	18	-	-
3000	3405	75	-	-	-	200	3210	6	-	68	62	3290	M56	3085	3020.0	40	18	-	-

\* Care should be taken with these sizes as the pipe o.d. does not relate to normal stainless steel dimensions.

1. Weldnecks (code 111) are bored to suit schedule of pipework used.

2. Code 105 flanges are supplied flat faced unless otherwise requested by the purchaser.

3. For information sizes DN10 to DN150 use PN16 dimensions.

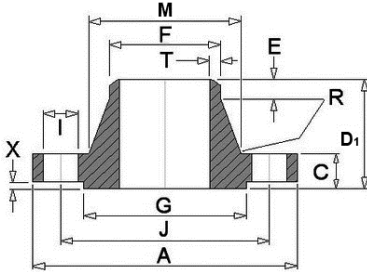
**Tel: +919867815181**

**Email: sales@randhirmetal.com**

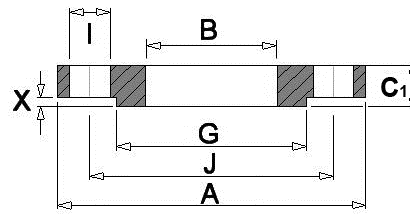
**Website: www.randhirmetal.com**

## BS4504 PN16 Flanges

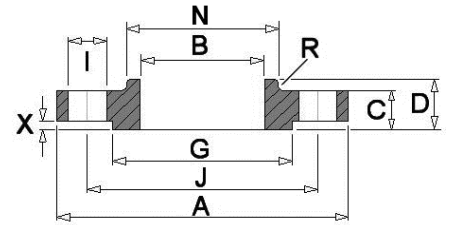
CODE 111



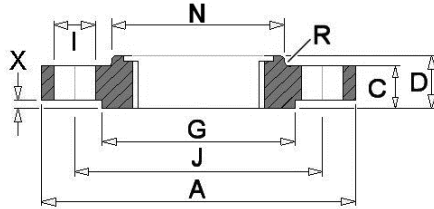
CODE 101



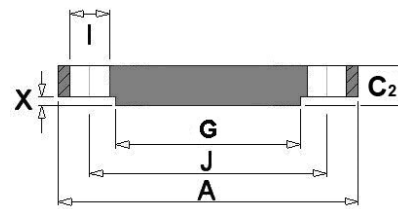
CODE 112



CODE 113



CODE 105



Dimensions in mm

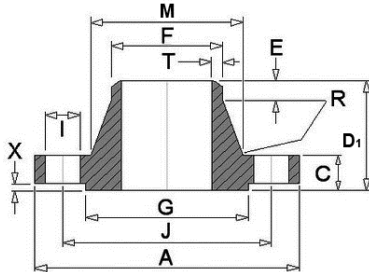
Nom. Size	Flange					Raised Face		Boss	Drilling	Bolting	Neck					Bore Diameter			
	DN	A	C	C1	C2	D	D1				G	X	N	No.	I		J	M	F
10	90	14	14	14	20	35	40	2	30	4	14	60	M12	28	17.2	6	3	1.8	18.0
15	95	14	14	14	20	35	45	2	35	4	14	65	M12	32	21.3	6	3	2.0	22.0
20	105	16	16	16	24	38	58	2	45	4	14	75	M12	39	26.9	6	4	2.3	27.5
25	115	16	16	16	24	38	68	2	52	4	14	85	M12	46	33.7	6	4	2.6	34.5
32	140	16	18	16	26	40	78	2	60	4	18	100	M16	56	42.4	6	5	2.6	43.5
40	150	16	18	16	26	42	88	3	70	4	18	110	M16	64	48.3	7	5	2.6	49.5
50	165	18	20	18	28	45	102	3	84	4	18	125	M16	74	60.3	8	5	2.9	61.5
65	185	18	20	18	32	45	122	3	104	4 / 8	18	145	M16	92	76.1	10	6	2.9	77.5
80	200	20	20	20	34	50	138	3	118	8	18	160	M16	110	88.9	10	6	3.2	90.5
100	220	20	22	20	40	52	162	3	140	8	18	180	M16	130	114.3	12	6	3.6	116.0
125 *	250	22	22	22	44	55	188	3	168	8	18	210	M16	158	139.7	12	6	4.0	141.5
150	285	22	24	22	44	55	212	3	195	8	22	240	M20	184	168.3	12	8	4.5	170.5
200	340	24	26	24	44	62	268	3	246	12	22	295	M20	234	219.1	16	8	5.6	221.5
250	405	26	29	26	46	70	320	3	298	12	26	355	M24	288	273.0	16	10	6.3	276.5
300	460	28	32	28	46	78	378	4	350	12	26	410	M24	342	323.9	16	10	7.1	327.6
350	520	30	35	30	57	82	438	4	400	16	26	470	M24	390	355.6	16	10	8.0	359.0
400	580	32	38	32	63	85	490	4	456	16	30	525	M27	444	406.4	16	10	8.0	411.0
450	640	34	42	36	63	87	550	4	502	20	30	585	M27	490	457.0	16	12	8.0	462.0
500	715	34	46	36	73	90	610	4	559	20	33	650	M30	546	508.0	16	12	8.0	513.5
600	840	36	52	44	83	95	725	5	658	20	36	770	M33	650	610.0	18	12	8.8	616.5
700	910	36	60	48	83	100	795	5	760	24	36	840	M33	750	711.0	18	12	8.6	-
800	1025	38	68	52	90	105	900	5	864	24	39	950	M36	848	813.0	20	12	10.0	-
900	1125	40	76	58	94	110	1000	5	968	28	39	1050	M36	948	914.0	20	12	10.0	-
1000	1255	42	84	64	100	120	1115	5	1072	28	42	1170	M39	1056	1016.0	22	12	10.0	-
1200	1485	48	98	76	-	130	1330	5	-	32	48	1390	M45	1260	1220.0	30	12	12.5	-
1400	1685	52	-	-	-	145	1530	5	-	36	48	1590	M45	1465	1420.0	30	12	14.2	-
1600	1930	58	-	-	-	160	1750	5	-	40	56	1820	M52	1668	1620.0	35	12	16.0	-
1800	2130	62	-	-	-	170	1950	5	-	44	56	2020	M52	1870	1820.0	35	15	17.5	-
2000	2435	66	-	-	-	190	2150	5	-	48	62	2230	M56	2072	2020.0	40	15	20.0	-

\* Care should be taken with these sizes as the pipe o.d. does not relate to normal stainless steel dimensions.

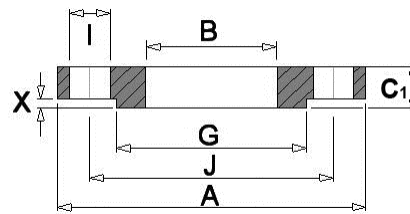
1. Weldnecks (code 111) are bored to suit schedule of pipework used.
2. Code 105 flanges are supplied flat faced unless otherwise requested by the purchaser.

## BS4504 PN25 Flanges

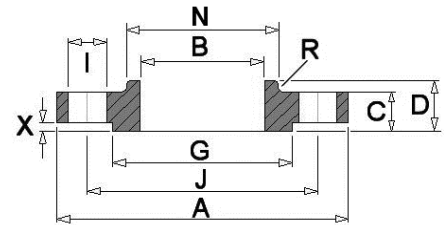
CODE 111



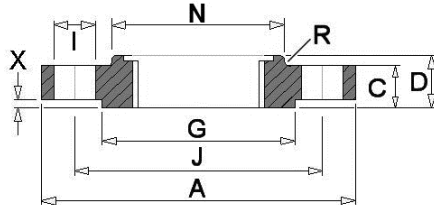
CODE 101



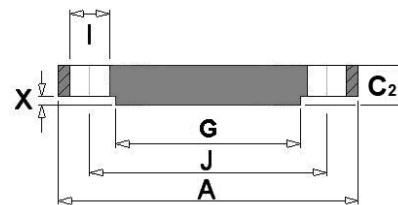
CODE 112



CODE 113



CODE 105



Dimensions in mm

Nom. Size	Flange					Raised Face	Boss	Drilling			Bolting	Neck					Bore Diameter		
	A	C	C1	C2	D			D1	G	X		N	No.	I	J	M		F	E
10	90	16	14	16	22	35	40	2	30	4	14	60	M12	28	17.2	6	3	1.8	18.0
15	95	16	14	16	22	38	45	2	35	4	14	65	M12	32	21.3	6	3	2.0	22.0
20	105	18	16	18	26	40	58	2	45	4	14	75	M12	40	26.9	6	4	2.3	27.5
25	115	18	16	18	28	40	68	2	52	4	14	85	M12	46	33.7	6	4	2.6	34.5
32	140	18	18	18	30	42	78	2	60	4	18	100	M16	56	42.4	6	5	2.6	43.5
40	150	18	18	18	32	45	88	3	70	4	18	110	M16	64	48.3	7	5	2.6	49.5
50	165	20	20	20	34	48	102	3	84	4	18	125	M16	74	60.3	8	5	2.9	61.5
65	185	22	22	22	38	52	122	3	104	8	18	145	M16	92	76.1	10	6	2.9	77.5
80	200	24	24	24	40	58	138	3	118	8	18	160	M16	110	88.9	12	6	3.2	90.5
100	235	24	26	24	44	65	162	3	145	8	22	190	M20	134	114.3	12	6	3.6	116.0
125	270	26	28	26	48	68	188	3	170	8	26	220	M24	162	139.7	12	6	4.0	141.5
150	300	28	30	28	52	75	218	3	200	8	26	250	M24	190	168.3	12	8	4.5	170.5
200	360	30	32	30	52	80	278	3	256	12	26	310	M24	244	219.1	16	8	6.3	221.5
250	425	32	35	32	60	88	335	3	310	12	30	370	M27	296	273.0	18	10	7.1	276.5
300	485	34	38	34	67	92	395	4	364	16	30	430	M27	350	323.9	18	10	8.0	327.5
350	555	38	42	38	72	100	450	4	418	16	33	490	M30	398	355.6	20	10	8.0	359.5
400	620	40	46	40	78	110	505	4	472	16	36	550	M33	452	406.4	20	10	8.8	411.0
450	670	42	50	44	84	110	555	4	520	20	36	600	M33	500	457.0	20	12	8.8	462.0
500	730	44	56	45	90	125	615	4	580	20	36	660	M33	558	508.0	20	12	10.0	513.5
600	845	46	68	54	100	125	720	5	684	20	39	770	M36	660	610.0	20	12	11.0	616.5
700	960	46	-	-	-	125	820	5	-	24	42	875	M39	760	711.0	20	12	12.5	-
800	1085	50	-	-	-	135	930	5	-	24	48	990	M45	864	813.0	22	12	14.2	-
900	1185	54	-	-	-	145	1030	5	-	28	48	1090	M45	968	914.0	24	12	16.0	-
1000	1320	58	-	-	-	155	1140	5	-	28	56	1210	M52	1070	1016.0	24	12	17.5	-
1200	1530	-	-	-	-	-	1350	5	-	32	56	1420	M52	-	1220.0	-	12	12.5	-
1400	1755	-	-	-	-	-	1560	5	-	36	62	1640	M56	-	1420.0	-	12	14.2	-
1600	1975	-	-	-	-	-	1780	5	-	40	62	1860	M56	-	1620.0	-	12	16.0	-
1800	2185	-	-	-	-	-	1985	5	-	44	70	2070	M64	-	1820.0	-	15	17.5	-
2000	2425	-	-	-	-	-	2210	5	-	48	70	2300	M64	-	2020.0	-	15	20.0	-

\* Care should be taken with these sizes as the pipe o.d. does not relate to normal stainless steel dimensions.

1. Weldnecks (code 111) are bored to suit schedule of pipework used.

2. Code 105 flanges are supplied flat faced unless otherwise requested by the purchaser.

3. For information sizes DN10 to DN150 use PN40 dimensions.

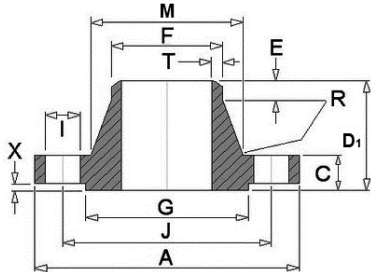
Tel: +919867815181

Email: sales@randhirmetal.com

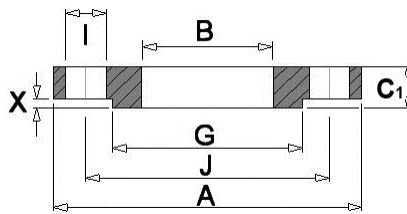
Website: www.randhirmetal.com

## BS4504 PN40 Flanges

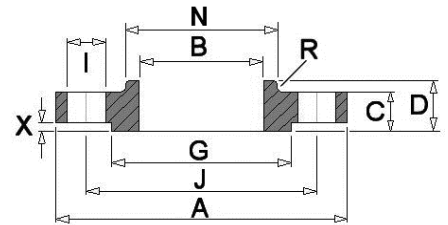
CODE 111



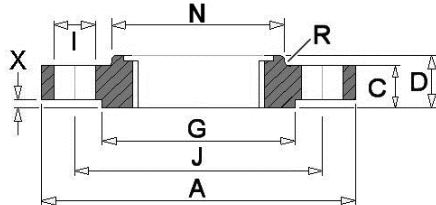
CODE 101



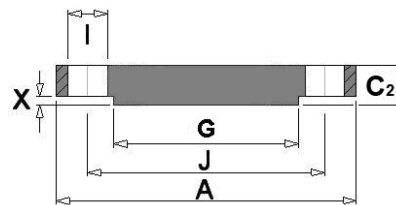
CODE 112



CODE 113



CODE 105



Dimensions in mm

Nom. Size	Flange						Raised Face		Boss	Drilling			Bolting	Neck					Bore Diameter
	A	C	C1	C2	D	D1	G	X		No.	I	J		M	F	E	R	T	
10	90	16	14	16	22	35	40	2	30	4	14	60	M12	28	17.2	6	3	1.8	18.0
15	95	16	14	16	22	38	45	2	35	4	14	65	M12	32	21.3	6	3	2.0	22.0
20	105	18	16	18	26	40	58	2	45	4	14	75	M12	40	26.9	6	4	2.3	27.5
25	115	18	16	18	28	40	68	2	52	4	14	85	M12	46	33.7	6	4	2.6	34.5
32	140	18	18	18	30	42	78	2	60	4	18	100	M16	56	42.4	6	5	2.6	43.5
40	150	18	18	18	32	45	88	3	70	4	18	110	M16	64	48.3	7	5	2.6	49.5
50	165	20	20	20	34	48	102	3	84	4	18	125	M16	74	60.3	8	5	2.9	61.5
65	185	22	22	22	38	52	122	3	104	8	18	145	M16	92	76.1	10	6	2.9	77.5
80	200	24	24	24	40	58	138	3	118	8	18	160	M16	110	88.9	12	6	3.2	90.5
100	235	24	26	24	44	65	162	3	145	8	22	190	M20	134	114.3	12	6	3.6	116.0
125	270	26	28	26	48	68	188	3	170	8	26	220	M24	162	139.7	12	6	4.0	141.5
150	300	28	30	28	52	75	218	3	200	8	26	250	M24	190	168.3	12	8	4.5	170.5
200	375	34	36	36	52	88	285	3	260	12	30	320	M27	244	219.1	16	8	6.3	221.5
250	450	38	42	38	60	105	345	3	312	12	33	385	M30	306	273.0	18	10	7.1	276.5
300	515	42	48	42	67	115	410	4	380	16	33	450	M30	362	323.9	18	10	8.0	327.5
350	580	46	54	46	72	125	465	4	424	16	36	510	M33	408	355.6	20	10	8.8	359.5
400	660	50	60	50	78	135	535	4	478	16	39	585	M36	462	406.4	20	10	11.0	411.0
450	685	50	66	54	84	135	560	4	522	20	39	610	M36	500	457.0	20	12	12.5	462.0
500	755	52	72	56	90	140	615	4	576	20	42	670	M39	562	508.0	20	12	14.2	513.5
600	890	60	84	70	100	150	735	5	686	20	48	795	M45	666	610.0	20	12	16.0	616.5

\* Care should be taken with these sizes as the pipe o.d. does not relate to normal stainless steel dimensions.

1. Weldnecks (code 111) are bored to suit schedule of pipework used.
2. Code 105 flanges are supplied flat faced unless otherwise requested by the purchaser.